

Better Health for All



COUNTY OF SANTA CLARA
Health System

DATE: February 4, 2019

TO: Honorable Members of the Board of Supervisors
 Jeffrey V. Smith, M.D., J.D., County Executive

FROM: René G. Santiago, Deputy County Executive/Director, CSCHS
 Toni Tullys, Director, Behavioral Health Services

SUBJECT: Behavioral Health Services Department's Update on the Jail Diversion
 Community Assessment Tool

DocuSigned by:

Rene Santiago

A968A3B7E216400...

DocuSigned by:

Toni Tullys

AB2AABE6ED30409...

Community Assessment Tool Purpose and Development

On August 30, 2016, the Board of Supervisors approved recommendations from Administration related to the Jail Diversion and Behavioral Health Subcommittee of the Reentry Network (ID#82906). One of the recommendations was to develop a standardized, validated screening tool and assessment process with public safety partners, with the goal to divert individuals from jail into community based services. This effort was assigned to the Behavioral Health Services Department (BHSD).

The BHSD convened a Community Assessment Work Group ('Work Group') in September and October, 2016, in which members reviewed existing community assessment tools. Law enforcement partners quickly identified available and easily accessible community services options as their most critical need to divert individuals from jail. While the BHSD had planned to implement new crisis residential facilities, mobile crisis teams and a Crisis Stabilization Unit, there were unexpected facility delays and clinical recruitment issues, which delayed implementation.

In February 2017, participants from BHSD, the Office of the Sheriff (Sheriff) and a Criminal Justice contract provider visited the Los Angeles Police Department (LAPD) Mental Health Unit. In September 2017, the LAPD Mental Health Command Staff presented to the Work Group, SO and County Chiefs and shared their Mental Illness Triage Flowchart, which serves as a jail diversion assessment tool. The Sheriff and County Chiefs expressed interest in the development of a similar tool and process in Santa Clara County. The BHSD worked with LAPD and in February 2018, convened a meeting with the Deputy County Executive for Jail Diversion, Chief Probation Officer, Assistant District Attorney, Assistant Public Defender, Assistant Sheriff, County Counsel and BHSD Director to conduct a final review of the LAPD flowchart to ensure alignment among the Public Safety/Jail Diversion partners and to modify the tool for Santa Clara County.

In December 2017, the Board issued a referral for the BHSD to report on how the Jail Diversion standardized validated screening tool will be implemented (ID#89182). In

In December 2017, the Board issued a referral for the BHSD to report on how the Jail Diversion standardized validated screening tool will be implemented (ID#89182). In April 2018, BHSD provided the Board with a status update on the Jail Diversion Community Assessment Tool (ID#90859). At this meeting, the Board directed BHSD to provide an update in six months relating to the implementation, effectiveness and impact of using the tool and partnerships with public safety agencies.

On October 30, 2018, the Department reported on the Community Assessment Tool's implementation status and partnerships with law enforcement agencies (ID#89182). The report described the monthly County Chiefs/Behavioral Health meeting, which includes the Sheriff's Command Staff, a County Chief, San Jose Police Department (SJPD) Command Staff, law enforcement liaisons and the BHSD clinical and mobile crisis senior managers. In addition, the report includes information on the Psychiatric Emergency Response Teams (PERTs), which will include a law enforcement officer and a BHSD clinician, working together to address the needs of individuals with a mental health crisis in the community.

Four law enforcement agencies will pilot the PERTs: the Sheriff, SJPD, Palo Alto Police Department and Morgan Hill Police Department. These agencies will pilot the Community Assessment Tool in their respective communities. The implementation challenge for the Community Assessment Tool is the successful recruitment of clinical staff for the PERTs; ongoing recruitment is underway.

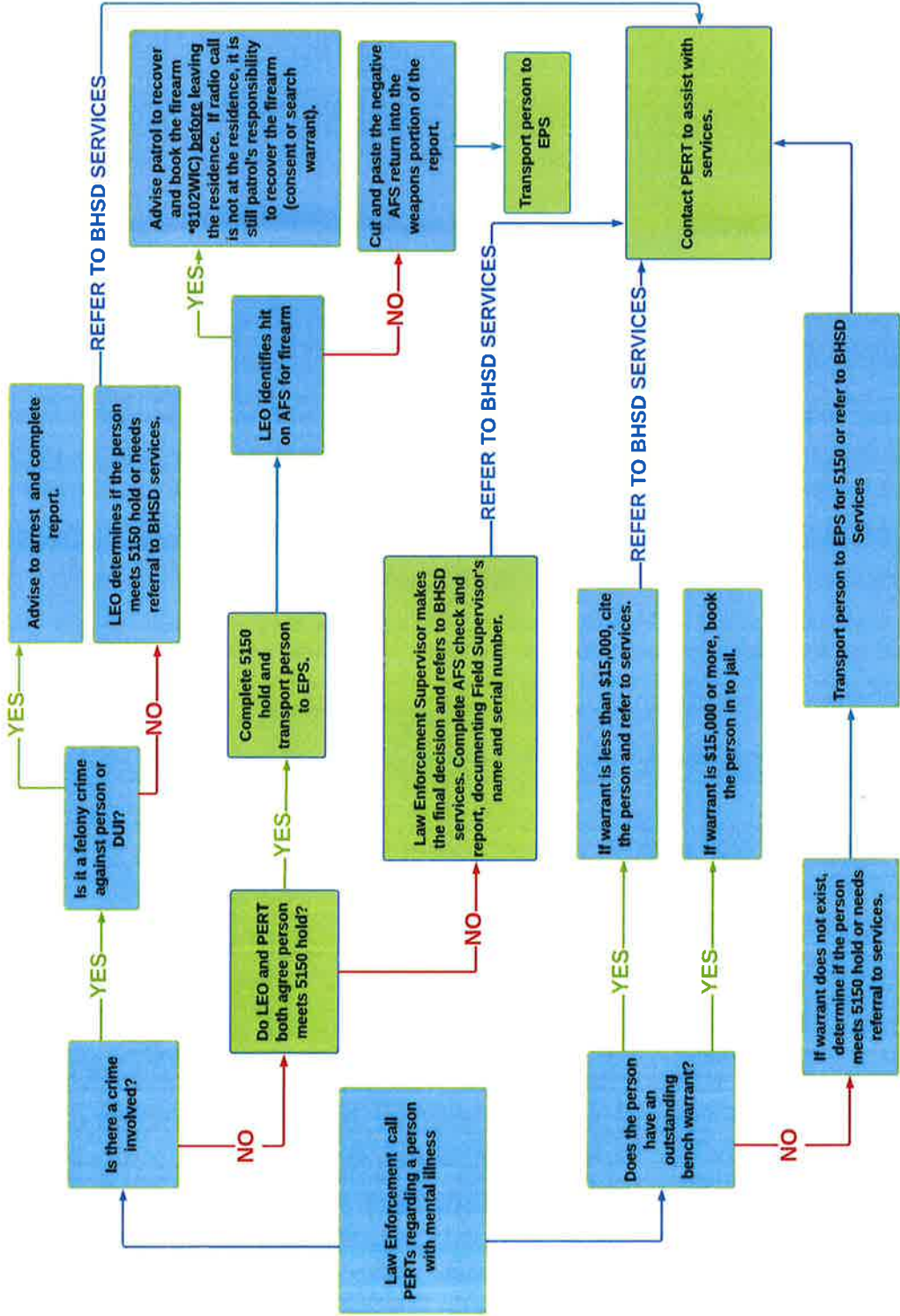
The Updated Community Assessment Tool

The Community Assessment Tool has been updated to 1) clearly identify the law enforcement and BHSD roles in the field; 2) clarify the workflows from the law enforcement officer's initial contact in the field to a person's disposition (EPS, BHSD services or, when appropriate, custody); and 3) illustrate the decision making process to simplify use of the tool in the field for law enforcement officers and their clinician partners.

cc: Miguel Marquez, Chief Operating Officer
James R. Williams, County Counsel
Megan Doyle, Clerk of the Board
Chief Board Aides
Debbie Dills Thompson, OBA
Agenda Review Administrator

COUNTY OF SANTA CLARA HEALTH SYSTEM BEHAVIORAL HEALTH SERVICES DEPARTMENT

JAIL DIVERSION COMMUNITY ASSESSMENT TOOL FOR INDIVIDUALS WITH MENTAL ILLNESS



LEGEND:
 BLUE: LAW ENFORCEMENT
 GREEN: BEHAVIORAL HEALTH

ACRONYMS:
 Law Enforcement Officers (LEO)
 Psychiatric Emergency Response Teams (PERT)
 Driving Under the Influence (DUI)
 Emergency Psychiatric Services (EPS)